



Leibniz Supercomputing Centre
of the Bavarian Academy of Sciences and Humanities

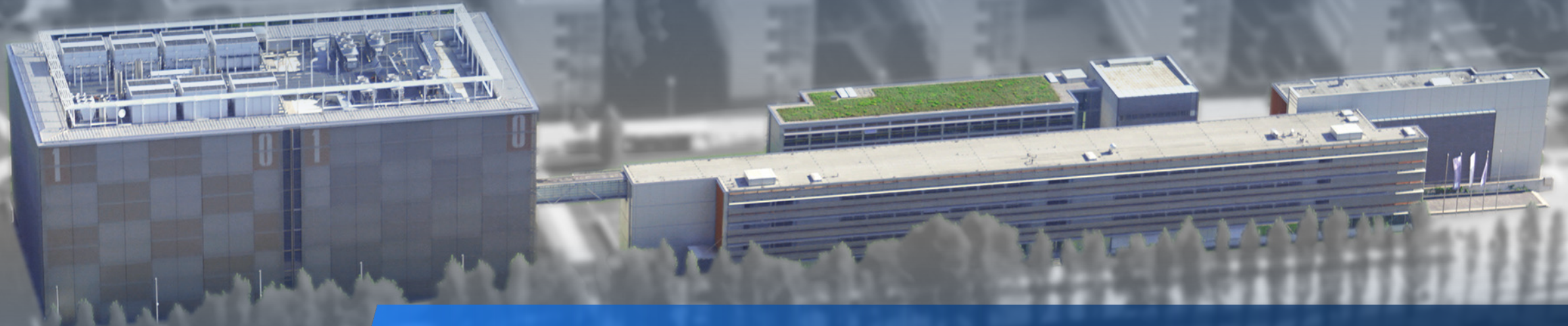
Data Protection – A View from a Supercomputing Center

Prof. Dr. Dieter Kranzlmüller
Ludwig-Maximilians-Universität München (LMU) &
Leibniz-Rechenzentrum (LRZ)

Leibniz-Rechenzentrum (LRZ) der Bayerischen Akademie der Wissenschaften
Digitalisierungspartner für die Wissenschaft

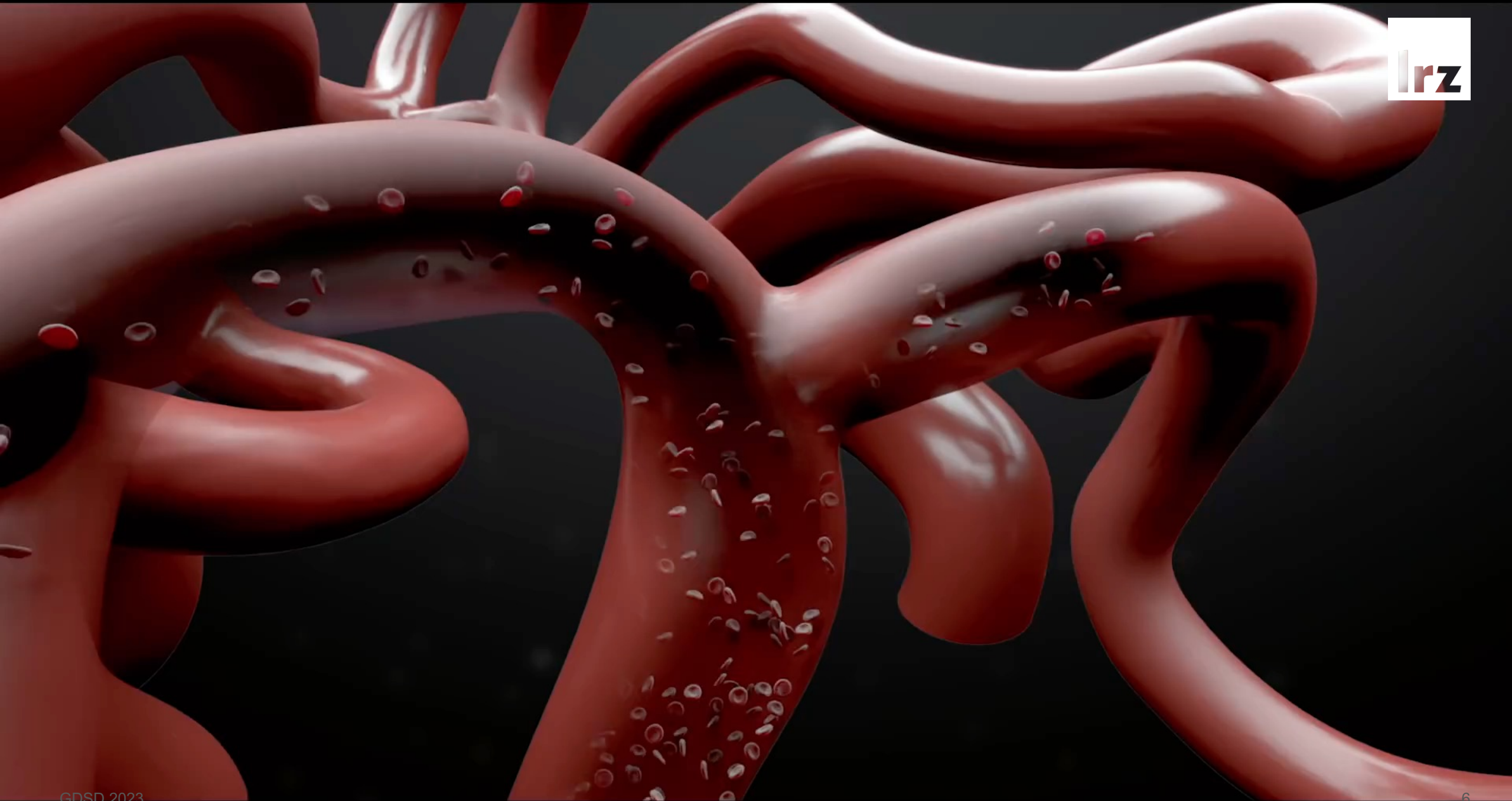
BAaW

lrz



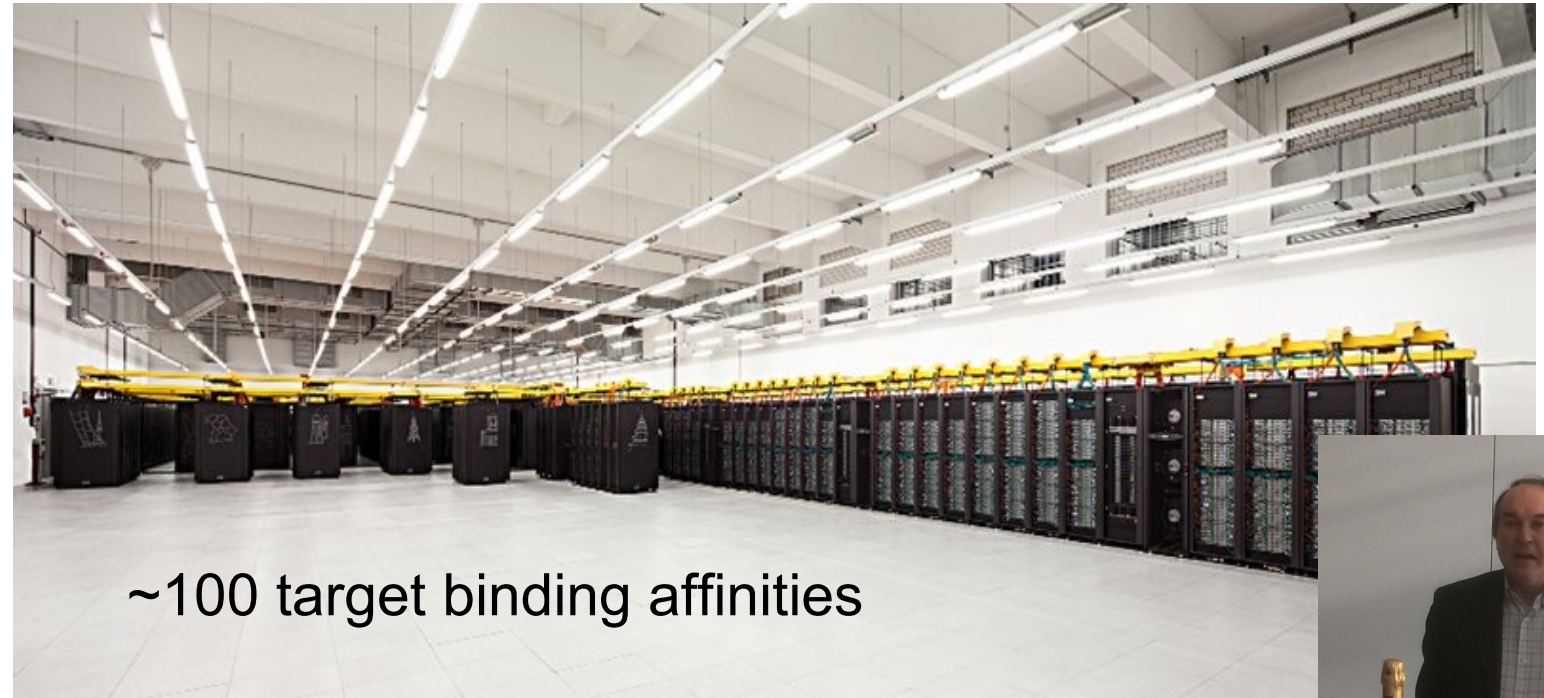
IT-Dienste für die Wissenschaft seit 1962
Münchener Universitäten, Bayern, Deutschland, Europa



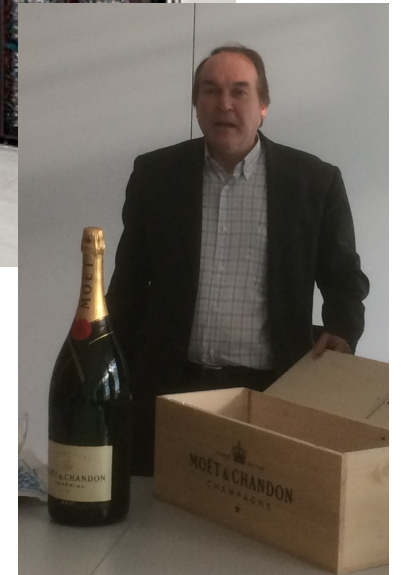


Molecular Simulation

- Running on all cores of SuperMUC Phase1+2



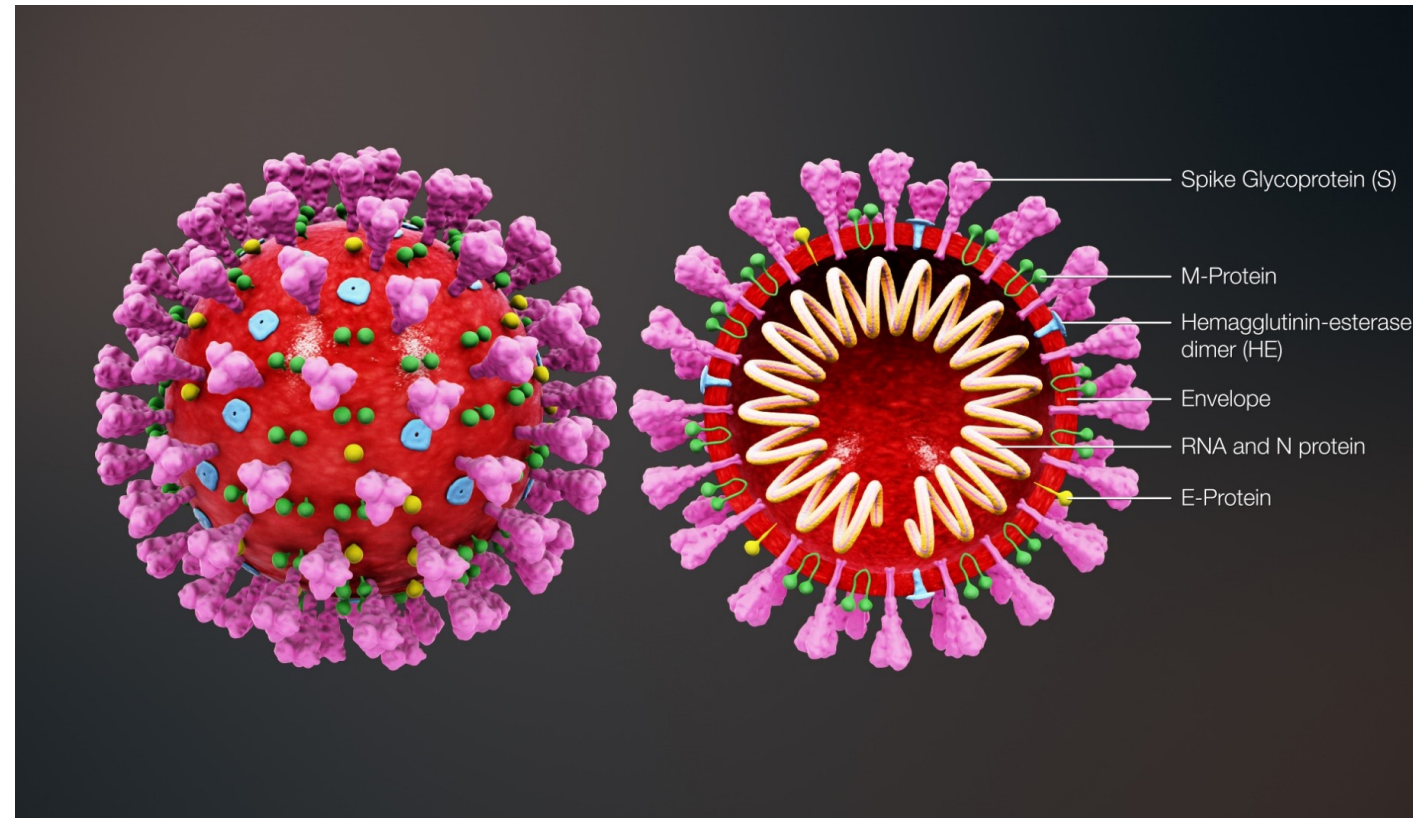
- Docking simulation of potentials drugs for breast cancer
- 37 hours total run time
- 241,672 cores
- 8.900.000 CPU hours
- 5 Terabytes of data produced



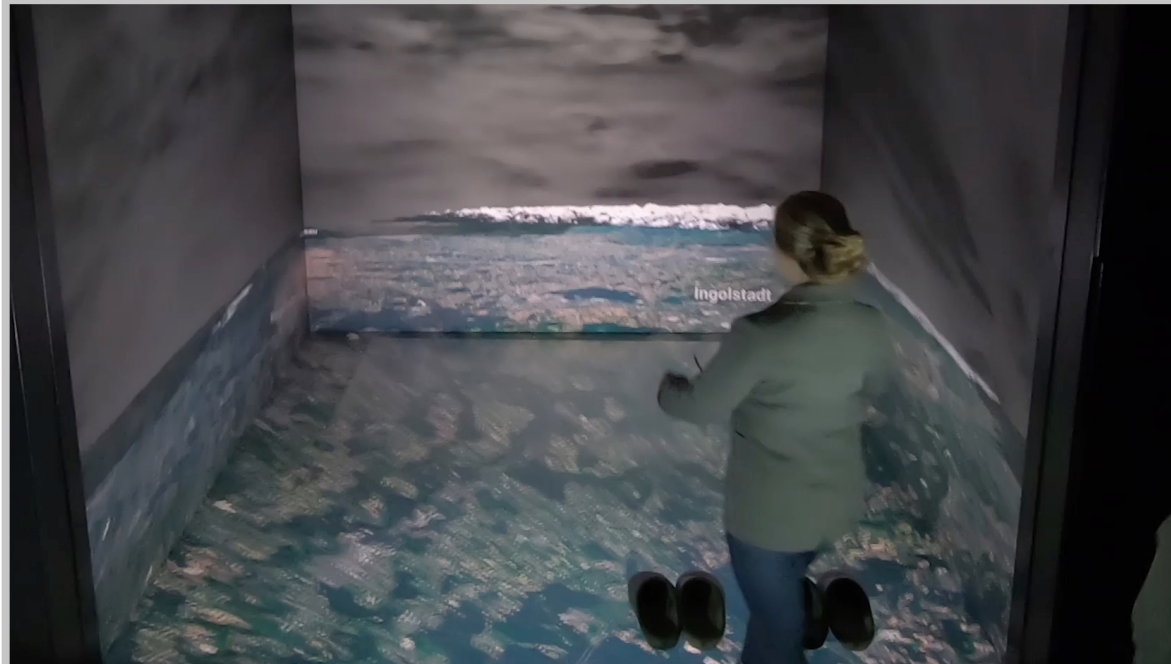
EU CoE CompBioMed
<http://www.compbioMed.eu>
EU Projects COMPAT and MAPPER
<http://www.compat-project.eu>

CompBioMed and Coronavirus

- Screening a large database of known drugs for their binding to proteins of the coronavirus on resources of LRZ (SuperMUC-NG)
- The binding free energy is determined with enhanced sampling MD simulations (ESMACS, TIES)
- The most interesting drug candidates will be studied in vitro



Kopplung von HPC-Modellen
für Klima und Hydrologie,
Workflow und Datenmanagement¹



Auswirkungen der Klimakrise auf hydro-
logische Extremereignisse wie
Überschwemmungen und Dürreperioden²

Background...

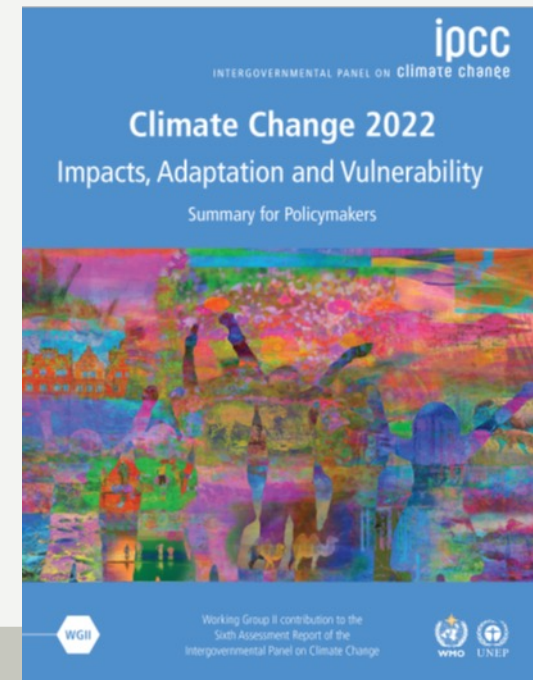
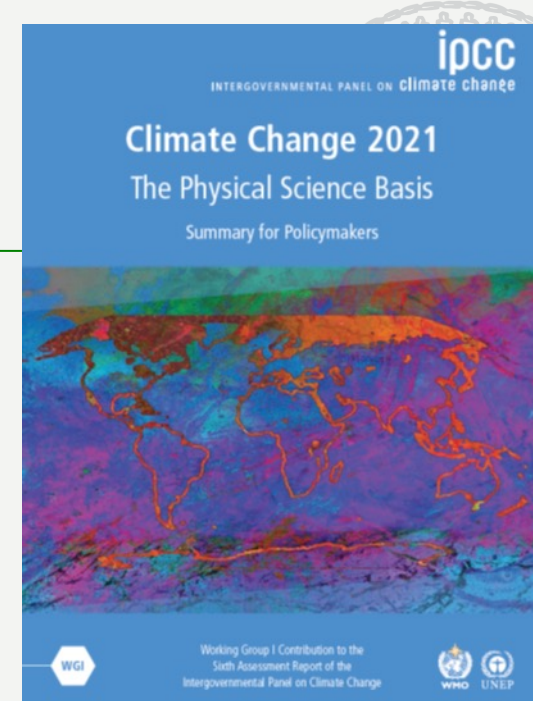
From the 6th Assessment Report of the IPCC (AR6) (2021/2022): Working Group I: The Physical Science Basis Working Group II: Impacts, Adaptation and Vulnerability

WGI.B – Possible Climate Futures

*B.2 Many changes in the climate system become larger in direct relation to increasing global warming. They include **increases in the frequency and intensity of hot extremes**, marine heatwaves, and heavy precipitation, agricultural and ecological droughts in some regions [...]*

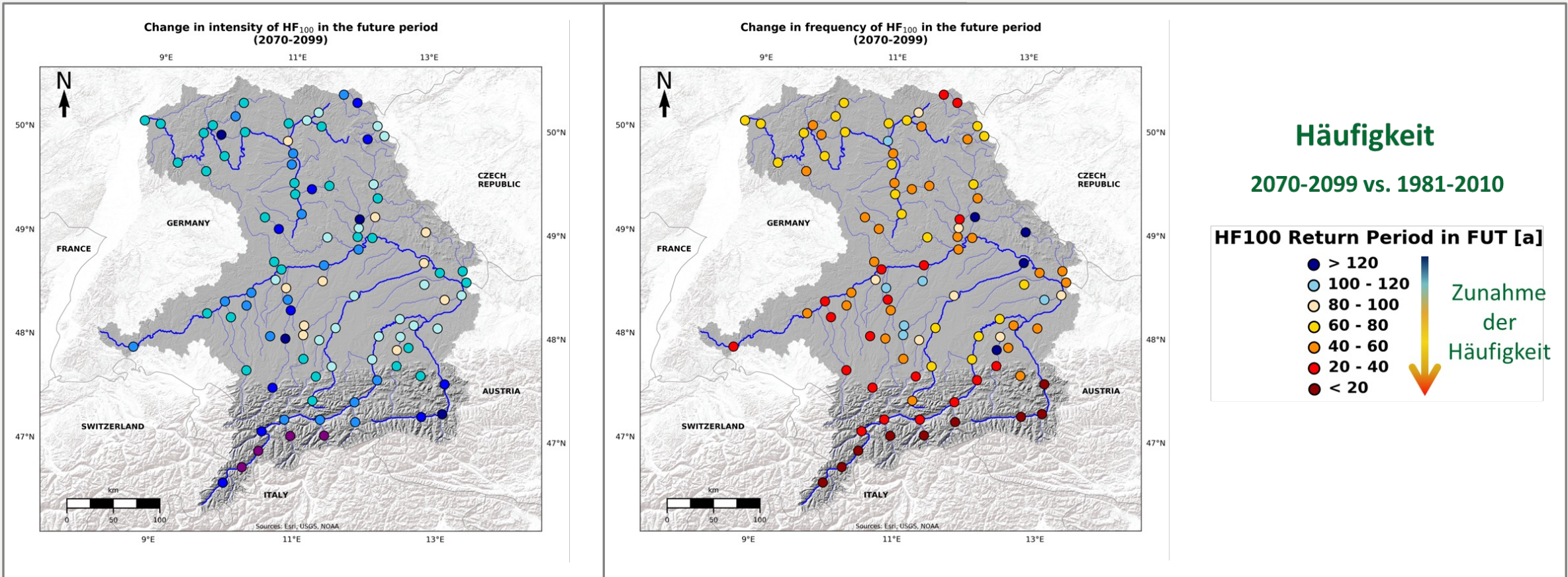
WGII.C – Future Adaptation Options and their Feasibility

*C.2 [...] **The effectiveness of adaptation** to reduce climate risk is documented for specific contexts, sectors and regions (high confidence) and **will decrease with increasing warming**. Integrated, multi-sectoral solutions [...] increase the feasibility and effectiveness of adaptation in multiple sectors.*



Will extreme flows/floods (e.g. HQ100) be more severe?

Changes in Frequency and Intensity of HQ100 in Bavarian river basins



(Willkofer, Ludwig et al., in prep.)



26.9 PetaFlop/s = 26.900.000.000.000.000 Gleitkommaoperationen pro Sekunde

On-Premise Quantencomputer Digital-Analogue Quantum Computer (DAQC)





terrabyte

HPDA Platform

From Satellite to Cloud

Data storage

46,8 PB Capacity

3.340 Harddisks

360 GB/s Bandwidth

12 Racks (watercooled)

Compute- and
Data Analysis Platform

Direct Network DLR-LRZ

DATA SCIENCE ARCHIVE

Capacity (uncompressed): 585 PBytes

Data Science Archive

In operation

2x Spectra TFinity Libraries

2x 15.000 Slots

19 Tape drives LTO8

2.000 Cartridges

45 PB Speicher

Additionally

106 Tape drives LTO9

18.000 Cartridges

Süddeutsche Zeitung, 15.05.20
Hacker Attack

<https://www.sueddeutsche.de/digital/supercomputer-hacker-garching-corona-1.4909397>

15. Mai 2020, 14:34 Uhr IT-Sicherheit

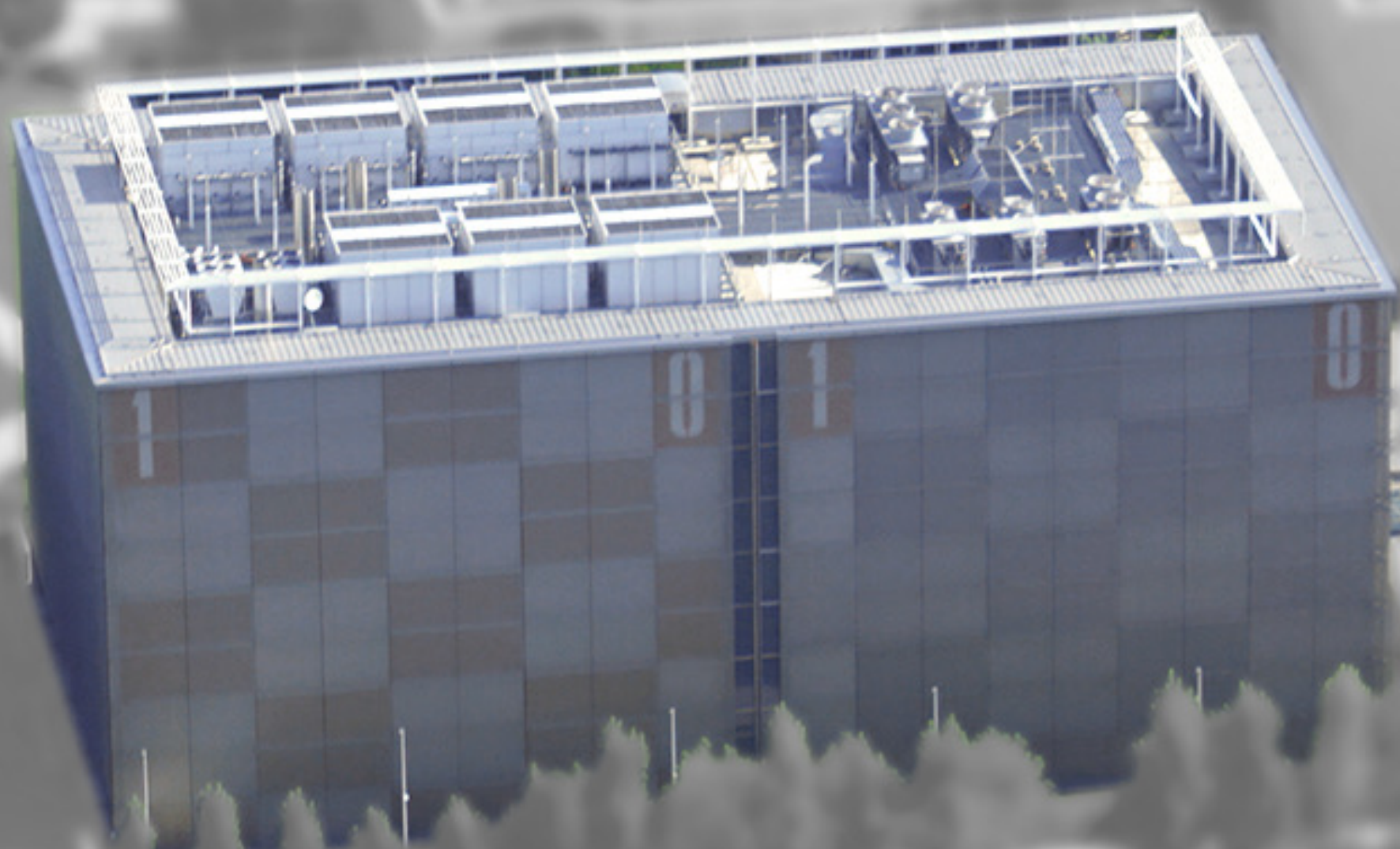
Angriff auf die Supercomputer



Der Hochleistungs-Computer Supermuc-NG in Garching. (Foto: Leibniz-Rechenzentrum Garching)

More than 10 high-performance data centers were hacked, including the one in Garching. They are used for research into Covid 19 therapies, but those affected suspect other motives behind the attacks.

Mehr als 10 Hochleistungs-Rechenzentren wurden gehackt, darunter das in Garching. Sie werden für die Forschungen an Covid-19-Therapien genutzt, doch die Betroffenen vermuten andere Motive hinter den Übergriffen.

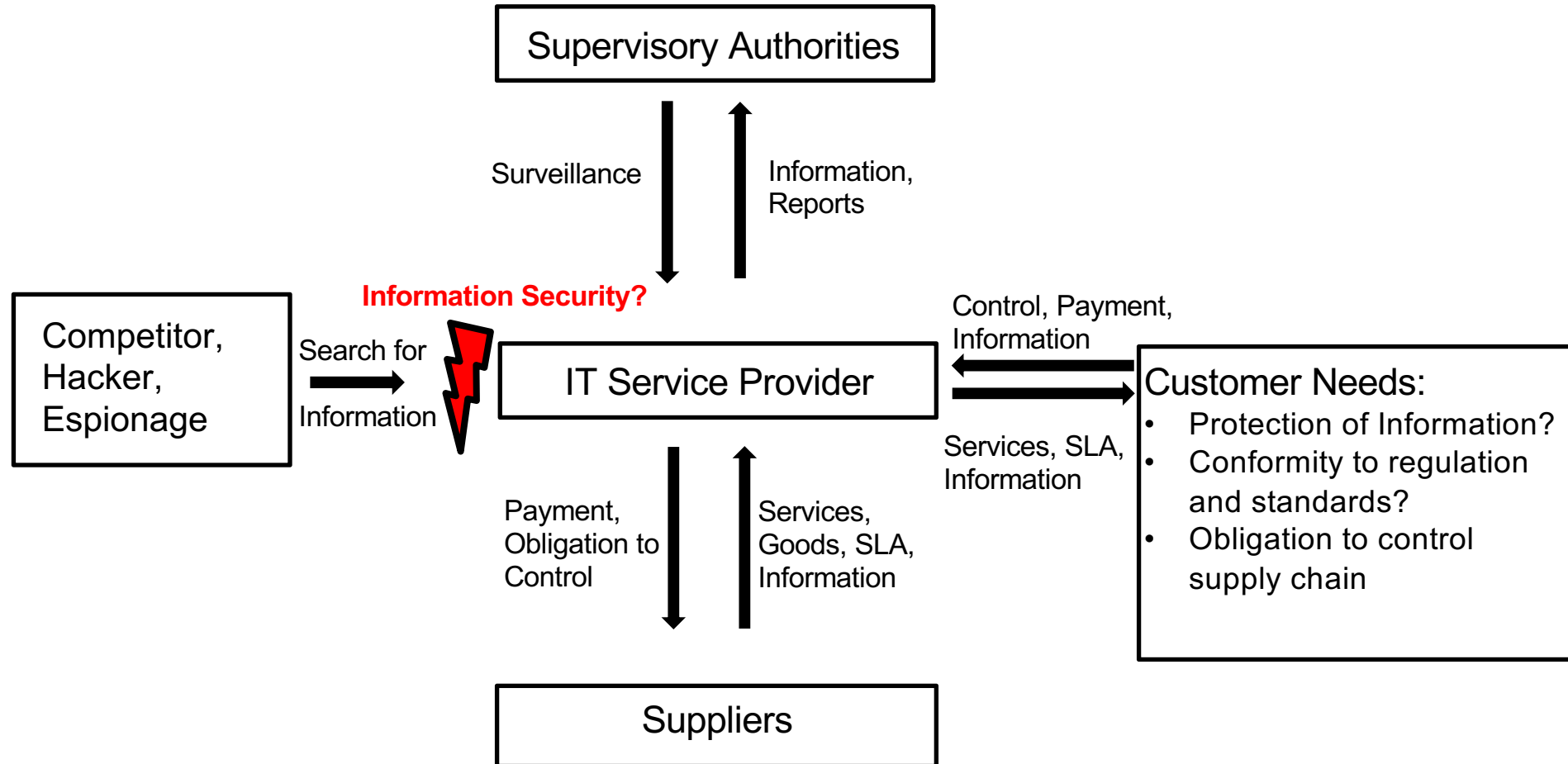




I/SMS @ LRZ

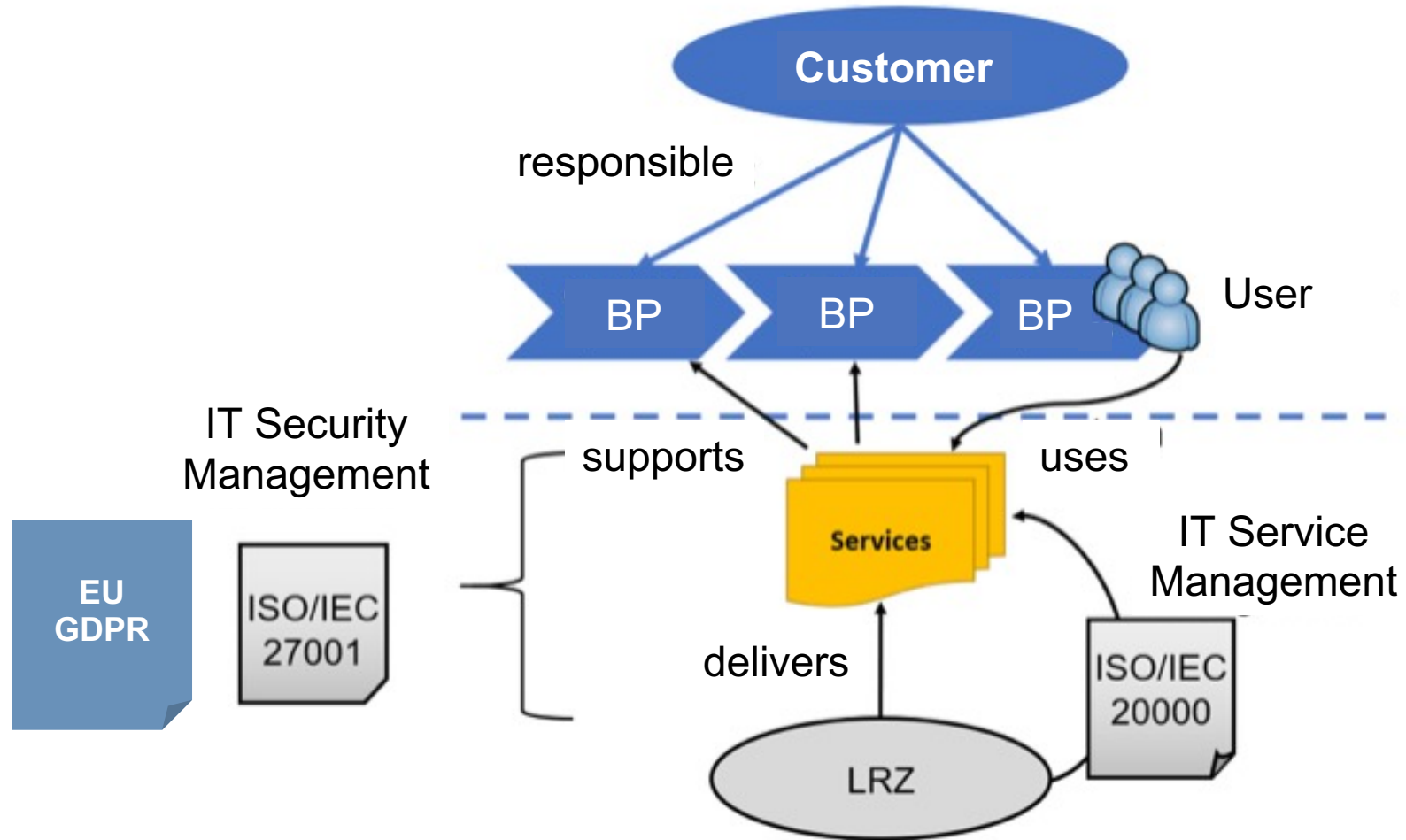
- Goal: integrated management system for IT services and information security
- Basis: international standards ISO/IEC 20000 and ISO/IEC 27000
- Team performance: 18 months, 250 employees
- Successful completion in 2019 of the level 2 certification audit.
- Re-certification every 3 years (July 2022)

Environment of IT Service Providers



Organization, Responsibilities, Tasks and a holistic management system

Motivation



Compliance to external requirements

- Risk-based approach
- Duty to document
- Data protection failure assessment
 - Risk management
- Declaration of breaches to rights and freedom of humans
 - Security Incident Management

Example:

Reporting to security
Incidents to the
administration

Treated as standard
security incident



LRZ Data Protection Declaration

<https://www.lrz.de/datenschutzerklaerung/>



- When you use services of the Leibniz Supercomputing Center of the Bavarian Academy of Sciences and Humanities (LRZ), you entrust us with data by which you can be identified. Such data is called personal data.
- The EU General Data Protection Regulation (GDPR) contains provisions on the protection of individuals with regard to the processing of personal data and on the free movement of such data (Article 1 (1) GDPR).
- This privacy notice tells you what data we collect, the purposes for which we collect the data and what we do with the collected data.
- Our privacy notices apply to all services that are offered by us as the responsible party and can be used by you.
- ...

- The Contractor shall process the Client Data on behalf of and in accordance with the instructions of the Client within the meaning of Art. 28 EU GDPR (commissioned processing). The Customer shall remain the controller in the sense of data protection law.
- The processing of Customer Data by the Contractor shall be carried out in the type, scope and for the purpose specified in the service and fee catalog of the LRZ in its currently valid version and in Annex 1 to this Agreement; the processing relates to the types of personal data and categories of data subjects specified therein.
- The processing of special categories of personal data (Art. 9 EU GDPR) **is generally excluded** and is reserved for special agreements.
- *Art. 9 EU GDPR: Processing of personal data revealing racial or ethnic origin, political opinions, religious or philosophical beliefs, or trade union membership, and the processing of genetic data, biometric data for the purpose of uniquely identifying a natural person, data concerning health or data concerning a natural person's sex life or sexual orientation shall be prohibited.*

Ransomware-Angriff auf LRZ



<https://tarnkappe.info/artikel/groove-ransomware-angriff-auf-das-leibniz-rechenzentrum-173729.html>

Groove: Ransomware-Angriff auf das Leibniz-Rechenzentrum

10.9.21 16:21 von Sunny Lesezeit: 3 Min.

Wurde das Leibniz-Rechenzentrum Opfer eines Ransomware-Angriffes? Die Groove-Ransomware-Gang gibt an, 43 GB an Daten erbeutet zu haben.

INHALT

Leibniz-Rechenzentrum im Fokus der Groove-Ransomware-Gang

Die Schwere des Angriffes wird derzeit geprüft – Ermittlungsbehörden sind eingeschaltet

Groove – Drohungen auch an die ukrainische Regierung

Der Groove-Ransomware-Gruppe scheint ein Angriff auf (Rechenzentrum) der Bayerischen Akademie der Wissenschaften in München geglückt zu sein. Die Ransomware-Erpresser drohen die Veröffentlichung der gestohlenen Daten in nur drei Tagen, wenn nicht rechtzeitig eingegangen werden.

Groove | Утечки

Новости | О нас

[Анонс] lrz.de stolen 43 gb source code

Опубликовано: 09 Сентября 2021 в 13:57 | Просмотров: 1709

Здравствуй! Мы все еще ждем реакции, по истечению 3х дней все данные будут выпущены

- adv-prog-ws20-rpg-game.zip
- am-abgabe1.zip
- assignment-1.zip
- assignments-ss2021.zip

Groove | Утечки

Новости | О нас

Украина и экстрадиции в США

Опубликовано: 09 Сентября 2021 в 15:22 | Просмотров: 2009

<https://www.bleepingcomputer.com/news/security/ukrainian-extradited-for-selling-2-000-stolen-logins-per-week/>

Если правительство украины не прекратит экстрадицию своих граждан в США, мы начнем операции по вымогательству против их гос сектора (**Частные компании СНГ на не интересны**)

„Wenn die ukrainische Regierung nicht aufhört, ihre Bürger an die USA auszuliefern, werden wir mit Erpressungsaktionen gegen den öffentlichen Sektor des Landes beginnen.“

2-Factor-Authentication for LRZ-Services

- Introduction for LRZ-internal services in Q1/2021 (i.e. VPN)
- Roll-out for external services (i.e. HPC)



New Research Project

- Bayern2MFA Project (since 2022)



Awareness Campaign during Europe-wide Security Month

E-Mails verschicken

Unverschlüsselte E-Mails sind so sicher wie Postkarten...



Deshalb:

- ✓ keine sensiblen Informationen versenden
- ✓ E-Mail-Verschlüsselung nutzen
- ✓ Dateien nicht als Anhang senden, sondern (passwortgeschützte) Download-Links nutzen (z.B. über LRZ Sync&Share)

#CybersecurityCheck lrz

E-Mail-Absender prüfen

Beim Erhalt von E-Mails immer:



- ✓ Domain/URL prüfen! Tippfehler im Absender sind verdächtig (z. B. @uni-muenchen.de anstatt @uni-muenchen.de)
- ✓ Stimmt der Anzeigename mit der Absenderadresse überein (z. B. Sparkasse Kundenservice <asidkf@aueng.de>)?

Pro-Tipp: Lernen Phishing-Mails zu erkennen (z. B. unter www.phish-test.de).

#CybersecurityCheck lrz

E-Mail-Anhänge & Links



- ✓ Anhänge aus unbekannter Quelle nicht öffnen
- ✓ Im Zweifel beim Absender nachfragen
- ✓ Wenn angehängte Dateien geöffnet werden, dann in der Leseansicht
- ✓ „Hier klicken“ könnte überall hinführen!
 - Links/Buttons/Bilder prüfen
 - Vorsicht bei Shortlinks wie z.B. bit.ly

#CybersecurityCheck lrz

Passwort-Qualität

Bei der Passwort-Wahl beachten:



- ✓ Länge schlägt Komplexität! Mind. 8, besser 12 Zeichen
- ✓ Zeichenraum ausnutzen: Buchstaben groß und klein, Zahlen und Sonderzeichen
- ✓ Für jeden Dienst ein eigenes Passwort

Wie merke ich mir ein Passwort? Satz bilden und Anfangsbuchstaben + Zahlen als Passwort nutzen.

#CybersecurityCheck lrz

Topics

- Emergency Management/Incident Response
- Vulnerability Scans
- Awareness
- Managed Security Services
- Security analyses
- Communication
- I/SMS Consulting & Tool
- University Information Security Program (HISP)



Current Projects

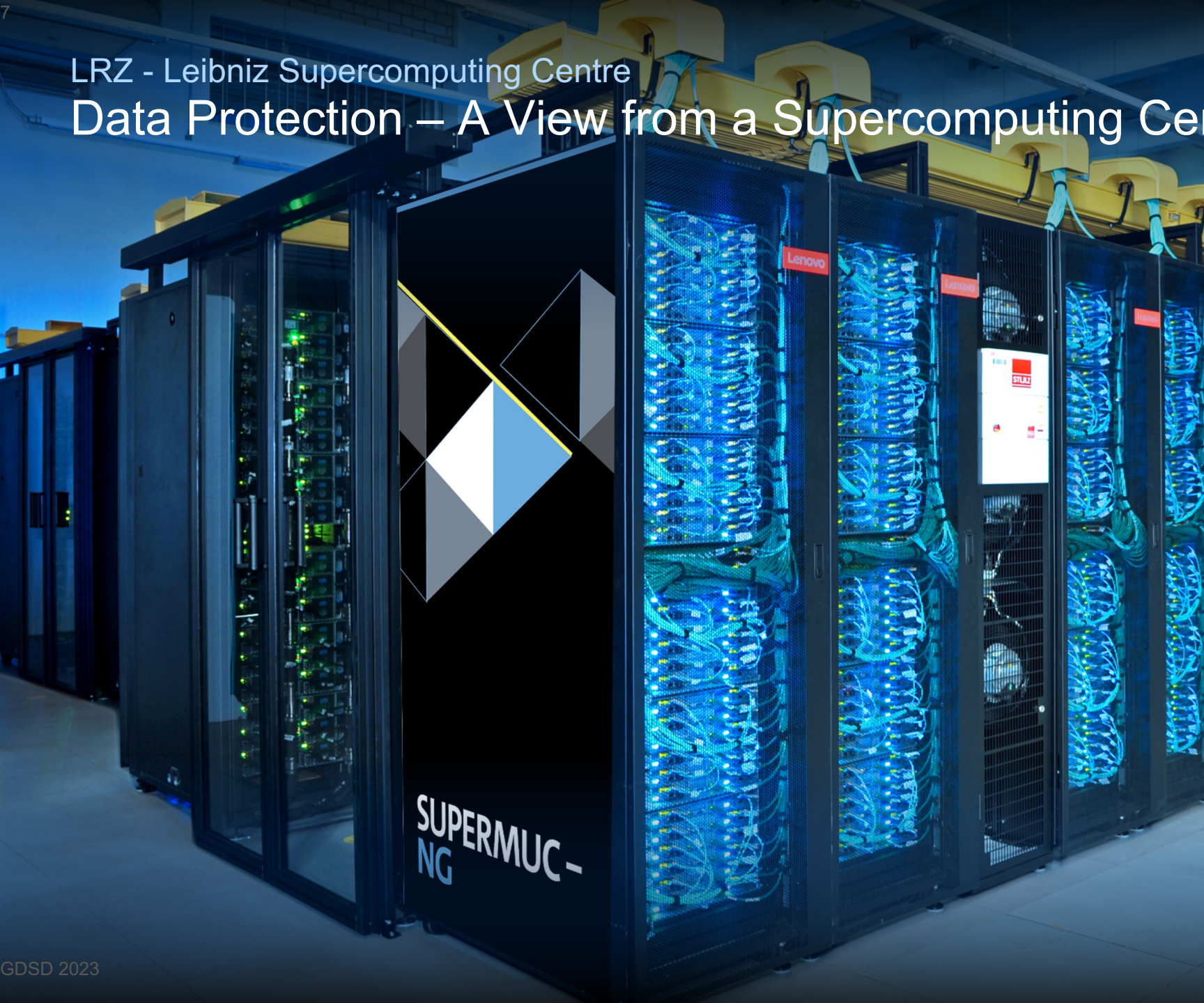
- Awareness Training & I/SMS Tool Introduction
- Vulnerability Scanning (technical platform)
- Vulnerability Messages & Advice
- Handouts & Concepts

3 Cooperating Locations

HS Augsburg | Uni Augsburg | LRZ

Contact:

informationssicherheit@digitalverbund.bayern



- Data is an important ingredient of science and scientific advancement
- **Data Protection** is essential for any form of data processing, including research data
- **EU-GDPR** and other standards (and certifications) provide frameworks and guidance for implementation and operation

Kontakt: Prof. Dr. Dieter Kranzlmüller
kranzlmuller@lrz.de | @Kranzlmuller